

**greengear®**

looking ahead



## LPG / PROPANE EQUIPMENT



catalogue 2018



## ***"LPG revolutionizes the world of small engines"***

**Greengear Global Srl is proud to present an innovative range of LPG dedicated products. This catalogue will introduce you to products you never knew could run on LPG, with all the power of gasoline.**

**Whether you are aiming for a perfectly manicured lawn with the comfort and high quality of a Greengear lawnmower or the reliability and robustness of a Greengear generator, you can find something here that suits your needs.**

**With cylinder utilization, you can now use the same LPG cylinder for your barbecue as you can for your generator, allowing you to enjoy the full range of Greengear equipment.**







## THE BENEFITS OF LPG



### **ECO-FRIENDLY:**

LPG is an environmentally friendly fuel, with reduced pollutant emissions.



### **CONVENIENT:**

Avoid the need for messy gasoline spillages - LPG cylinders and cartridges are easily connected, offering cleanliness and safety.

 **Low Cost**

 **Eco-friendly**

 **Practical**

 **Safe**



# THE BENEFITS OF LPG



## POWERFUL:

Thanks to the most advanced technology and with a higher calorific value than gasoline, LPG offers full engine performance.



## VERSATILE:

LPG cylinders are interchangeable between various equipment offering cylinder utilization.

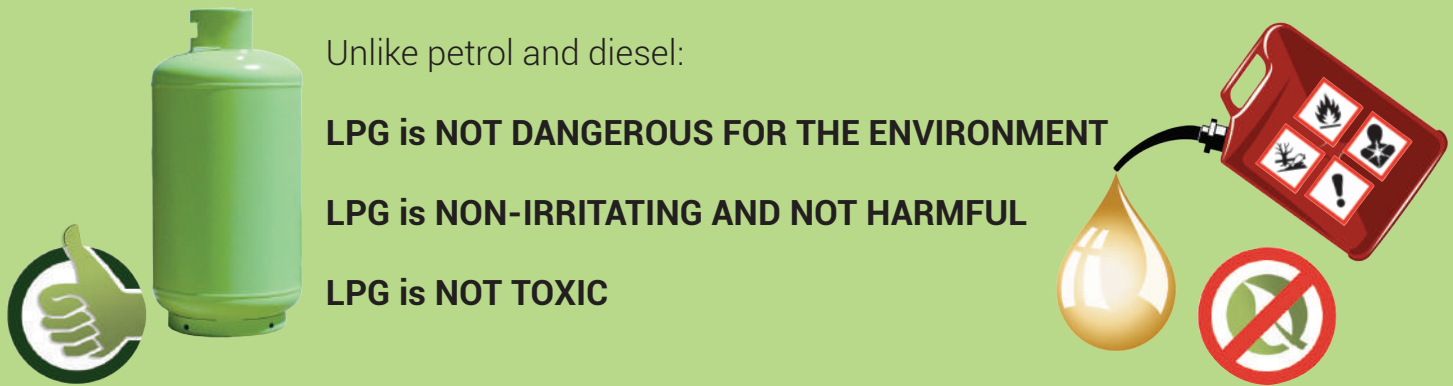


## LPG IS ENVIRONMENTALLY FRIENDLY

*"for a better future"*

**LPG** is an **environmentally friendly** fuel with reduced pollutant emissions.  
Harmful **particulate emissions are absent**.

Compared to gasoline engines, **CO<sub>2</sub> emissions are reduced by more than 50%** and other pollutants such as **HC-NO<sub>x</sub> are reduced by up to 35%**.



**LPG does not pollute soil, water or groundwater.**





## LPG IS CONVENIENT

### Extremely easy to use:

An **LPG** cylinder is connected to the equipment and **ready to use**.

**GOODBYE** messy refills!



### Storage of clean and safe fuel:

**LPG** is available in approved containers (cylinders and cartridges) that **can be stored safely**. The containers leave **no unpleasant odour** and can be **stored for long periods** of time; since **the product does not lose its quality**.



**LPG** can be **easily transported** anywhere thanks to the **uniquely designed containers** that comply with the most stringent regulations.



## LPG IS POWERFUL

An engine fuelled by **LPG**, with a higher calorific value than gasoline, **offers full engine performance** allowing it to reach the **same output as a gasoline or diesel engine**. All the benefits of using **LPG** are possible **without compromising safety standards, power** or the practicality of the engines.

**LPG** burns without residue and **reduces engine maintenance**, meaning fewer repairs, greater reliability and overall a **longer engine life**.

**LPG is up to 5 times more efficient** than traditional fuels, resulting in less energy waste and a **better use of our planet's resources**.





## LPG IS VERSATILE

The same **LPG** cylinder can be used with many **different appliances**.

Simply disconnect the hose from a product and reattach it to another product.

**The same LPG container for many applications!**





## ***Greengear is supporting excellence:***

Villa Carlotta is a villa in Northern Italy on Lake Como.

It was built for the Milanese marquis Giorgio Clerici in 1690 and extends over a 70,000m<sup>2</sup> area in Tremezzo, facing the Bellagio peninsula.

The most popular historic mansion on Lake Como, **has chosen innovative LPG-powered Greengear equipment for the care of its gardens.**

Villa Carlotta concentrate on maintaining their beautiful gardens while also **caring for the environment**, so that's why they chose to partner with Greengear.









			
LAWNMOWERS	POWER GENERATORS	WATER PUMPS	PRESSURE WASHERS
14	18	32	36







ZERO-TURN MOWERS

TRANSPORTERS

SHREDDERS

LOG SPLITTERS

38

42

46

50



**greengear**®  
by AXO





# LAWNMOWERS

The Greengear Basic and Premium range offers all of the great details that you would expect from a lawnmower: power, comfort and functionality. It is possible to precisely select the cutting height, thanks to the centralised control of up to 10 different levels. During mowing, the compact shape of the mower is optimized even in the tightest of areas. Equipped with powerful engines ranging from 135cc to 173cc and cutting widths from 16 to 22 inches, allowing for professional results. Greengear mowers are all equipped with traction control and high wheels, ideal for uneven terrain. Select models feature three different cutting systems to choose from: grass catcher, side discharge and mulching kit.





- 1 Powerful low-emission **Engine**
- 2 Resistant **Steel Body**
- 3 **Large Wheels** for the most uneven and steep terrain
- 4 Dedicated **ENERKIT** Carburettor
- 5 Ergonomic **Control Lever**
- 6 Fabric **Grass Bag** with fill level indicator
- 7 **Foldable and Adjustable** Handlebar for easy transport and storage



#### **Cutting Height Adjustment Handle**

Allows for precision cutting with up to 10 adjustments, easily adjustable based on grass type and area shape. Mowing at the correct height can reduce weed issues, support a healthy grass root system and increase drought resistance.



#### **Mulching Kit**

A Mulching kit cuts and re-cuts the grass clippings into tiny particles recycling them back onto the lawn – feeding the soil. Mulching kit comes as standard for select Greengear models, giving the option to mulch or to use the grass bag.




## LM-B16P

## LM-B18



### Technical Specifications

<b>PRODUCT CODE</b>	G.LM.B16.HP.001	G.LM.B18.SP.001
<b>CYLINDER BRACKET CODE</b>	G.LM.ACC.16.001	G.LM.ACC.18.001
<b>EQUIPMENT FEATURES</b>		
Cutting Width	400 mm / 16"	460 mm / 18"
Cutting Height	25-75 mm, 10 adjustments (Central)	25-75 mm, 10 adjustments (Central)
Grass Bag Capacity	50 L / 13.20 gal.	60 L / 15.85 gal.
Mulching Kit	NO	NO
Drive Type	Hand Push	Self Propelled
Deck	Steel	Steel
Wheels (Front / Rear)	6" / 8"	7" / 8"
Start Mode	Recoil	Recoil
Certification	CE	CE
Dimensions	100 cm x 53 cm x 61 cm / 39" x 21" x 24"	117 cm x 55 cm x 63 cm / 46" x 22" x 25"
Net Weight	28 kg / 62 lbs	33 kg / 73 lbs
<b>ENGINE SPECIFICATIONS</b>		
Engine	Greengear GG1LM - 4 stroke	Greengear GG1LM - 4 stroke
Displacement	135 cc	135 cc
Rated Speed	2800 rpm	2800 rpm
LPG / Propane Technology		
<b>Use</b>	Domestic/Commercial	Domestic/Commercial
<b>Fuel Consumption *</b>	385 g / h *	450 g / h *

\* Data depends on environment conditions and type of LPG mixture



#### Foldable Handlebar

When it is time to stow or transport the mower, the foldable handlebars make this a simple and easy task. Allowing the mower to become much more compact for storage spaces.



#### Cylinder Bracket

If you prefer to use an LPG cylinder, Greengear offer as an accessory, an optional bracket for each model of the lawnmower. This is able to accommodate different types of LPG cylinders, allowing for more commercial use.



## LM-P18



## LM-P20



## LM-P22



G.LM.P18.SP.001

G.LM.ACC.18.002

G.LM.P20.SP.001

G.LM.ACC.20.002

G.LM.P22.SP.001

G.LM.ACC.22.002

460 mm / 18"

25-75 mm, 10 adjustments (Central)

60 L / 15.85 gal.

NO

Self Propelled

Steel

7" / 8"

Recoil



117 cm x 55 cm x 63 cm /  
46" x 22" x 25"

38.4 kg / 84.65 lbs

510 mm / 20"

30-75 mm, 7 adjustments (Central)

70 L / 18.50 gal.

YES

Self Propelled

Steel

8" / 11"

Recoil



127 cm x 70 cm x 65 cm /  
50" x 28" x 26"

41.5 kg / 91.5 lbs

560 mm / 22"

30-75 mm, 7 adjustments (Central)

70 L / 18.50 gal.

YES

Self Propelled

Steel

8" / 11"

Recoil



127 cm x 75 cm x 65 cm /  
50" x 30" x 26"

42 kg / 92.6 lbs

Greengear GG1LM - 4 stroke

135 cc

2800 rpm



Domestic/Commercial

450 g / h \*

Greengear GG2LM - 4 stroke

173 cc

2800 rpm



Domestic/Commercial

540 g / h \*

Greengear GG2LM - 4 stroke

173 cc

2800 rpm



Domestic/Commercial

540 g / h \*



### Steel Deck

The deck of the lawnmower is made from steel, allowing more durability and robustness than other materials.



### Quick-Release Handle

Easy fastening and release of the handlebar retainers.



# POWER GENERATORS

Our Generator product range is suitable for both commercial and domestic environments. All generators are equipped with a 4-stroke engine, electric start, battery and a multifunctional display screen. The generators use alternators fitted with an Automatic Voltage Regulation stabilizer and feature a circuit breaker in case maximum power is exceeded.





**1 Handles**  
for easy transport

**2 Steel Frame**

**3 Easy Electric Start**

**4 Pneumatic Wheels**

**5 Safety Circuit Breaker**

**6 Multifunction Display**  
with information on the functioning

**7 Certified Sockets**

**8 Dedicated ENERKIT Carburettor**



#### Circuit Breaker

Thanks to the circuit breaker switch, that when activated – protects the generator against power overloads.



#### Electric Start

All Greengear Generators are equipped with an electric key start ignition, eliminating the difficulty of manual ignitions.



## Technical Specifications

### PRODUCT CODE

P.GE.PRT.03.002

### ELECTRICAL FEATURES

Rated Output	2.8 kW
Max Output	3.0 kW
Rated Voltage AC	115 V / 230 V
Rated Frequency	50 Hz
Sockets	1 Industrial 115V 16A 1 Industrial 230V 32A
Phase	Single
Power Technology	Automatic Voltage Regulation

### EQUIPMENT FEATURES

Certification	CE
Start Mode	Electric Start
Wheel and Handle Kit	NO
Multifunction Display	Meter: Working hours, Voltage, Frequency
Dimensions	60 cm x 48 cm x 42 cm / 23.6" x 18.9" x 16.5"
Net Weight	46 kg / 101 lbs

### ENGINE SPECIFICATIONS

Engine	Greengear GG3GN - 4 stroke
Displacement	212 cc
LPG / Propane Technology	<b>ENERKIT</b>
Use	Domestic/Commercial
Run Time at 1/2 Load *	8 hr - 5 kg / 9 lbs cylinder 15 hr - 9 kg / 20 lbs cylinder
Fuel Consumption *	429 g / kWh *

\* Data depends on environment conditions and type of LPG mixture

### Multifunction Display

The multifunction display screen allows you to verify the generator's working functions at all times. Using the button, you can switch between checking the Voltage, Frequency and Hours of use.



### Handles

In models 5kW and above, handle kit comes as standard. Thanks to the simple interlocking system, allowing it to be folded away when not necessary. The Wheel and Handle kit also allows for easy transportation and maneuverability.



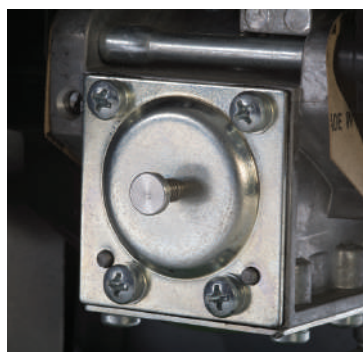
### Gas Connection

Connecting the gas cylinder is easy, thanks to the dedicated connector located at the rear of the generator.



### Enerkit

Each Generator is equipped with a unique LPG dedicated ENERKIT carburettor, allowing optimum performance. ENERKIT has an automatic safety shut off valve, stopping the fuel supply when the engine is off.





## GE-5000UK



## GE-6000UK



## GE-7000UK



P.GE.PRT.05.002

P.GE.PRT.06.002

P.GE.PRT.07.002

5.0 kW

6.0 kW

7.0 kW

5.5 kW

6.5 kW

7.5 kW

115 V / 230 V

115 V / 230 V

115 V / 230 V

50 Hz

50 Hz

50 Hz

1 Industrial 230V 32A

1 Industrial 230V 32A

1 Industrial 230V 32A

2 Industrial 115V 32A

2 Industrial 115V 32A

2 Industrial 115V 32A

Single

Single

Single

Automatic Voltage Regulation

Automatic Voltage Regulation

Automatic Voltage Regulation

CE

CE

CE

Electric Start

Electric Start

Electric Start

YES

YES

YES

Meter: Working hours,  
Voltage, Frequency

Meter: Working hours,  
Voltage, Frequency

Meter: Working hours,  
Voltage, Frequency

70 cm x 53 cm x 50 cm /  
27.5" x 20.8" x 19.6"

70 cm x 53 cm x 50 cm /  
27.5" x 20.8" x 19.6"

70 cm x 53 cm x 50 cm /  
27.5" x 20.8" x 19.6"

88 kg / 194 lbs

88 kg / 194 lbs

89 kg / 196 lbs

Greengear GG4GN - 4 stroke

Greengear GG5GN - 4 stroke

Greengear GG6GN - 4 stroke

390 cc

420 cc

445 cc



Domestic/Commercial

Commercial

Commercial

8 hr - 5 kg / 9 lbs cylinder

6 hr - 5 kg / 9 lbs cylinder

4 hr - 5 kg / 9 lbs cylinder

15 hr - 9 kg / 20 lbs cylinder

10 hr - 9 kg / 20 lbs cylinder

8 hr - 9 kg / 20 lbs cylinder

238 g / kWh \*

282 g / kWh \*

318 g / kWh \*



### Recoil Start

If the battery is recharging, recoil start is available as a backup source to start the generator.



### Voltage Switch

The voltage selection switch allows you to change between 115 V and 230 V depending on the need.



**Frame**  
Equipped with a steel frame which ensures long life and durability even in the harshest operating conditions.

Technical Specifications
PRODUCT CODE
ELECTRICAL FEATURES
Rated Output
Max Output
Rated Voltage AC
Rated Frequency
Sockets
Phase
Power Technology
EQUIPMENT FEATURES
Certification
Start Mode
Wheel and Handle Kit
Multifunction Display
Dimensions
Net Weight
ENGINE SPECIFICATIONS
Engine
Displacement
LPG / Propane Technology
Use
Run Time at 1/2 Load *
Fuel Consumption *



# GE-6000T

# GE-7000T



P.GE.PRT.06.301

P.GE.PRT.07.301

6.0 kW

7.0 kW

6.5 kW

7.5 kW

230 V / 400 V

230 V / 400 V

50 Hz

50 Hz

1 Industrial 230V

1 Industrial 230V

1 Industrial 400V

1 Industrial 400V

3 Phase

3 Phase

Automatic Voltage Regulation

Automatic Voltage Regulation

CE

CE

Electric Start

Electric Start

YES

YES

Meter: Working hours,  
Voltage, Frequency

Meter: Working hours,  
Voltage, Frequency

70 cm x 56 cm x 50 cm /  
27.5" x 22.0" x 23.2"

70 cm x 56 cm x 50 cm /  
27.5" x 22.0" x 23.2"

88 kg / 194 lbs

96 kg / 211 lbs

Greengear GG5GN - 4 stroke

Greengear GG6GN - 4 stroke

420 cc

445 cc



Commercial

Commercial

6 hr - 5 kg / 9 lbs cylinder

4 hr - 5 kg / 9 lbs cylinder

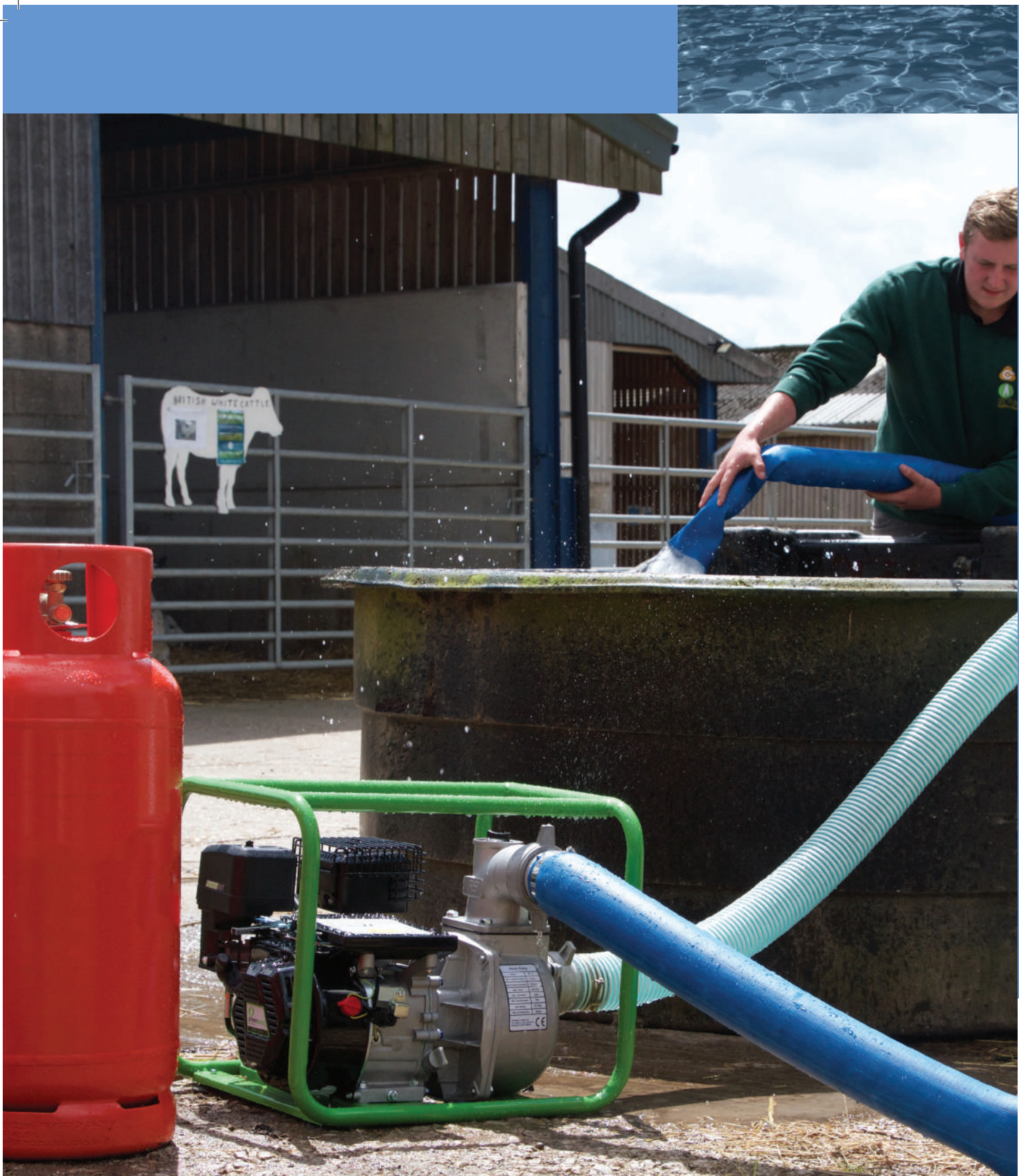
10 hr - 9 kg / 20 lbs cylinder

8 hr - 9 kg / 20 lbs cylinder

282 g / kWh \*

318 g / kWh \*

\* Data depends on environment conditions and type of LPG mixture



# WATER PUMPS

The water pumps are available in 4 different sizes, ranging from clear water to sewage. The pump bodies are ultra-resistant aluminium and are able to move large amounts of water with capacities from 25m<sup>3</sup> / h to 70m<sup>3</sup> / h. The pumps are ideal for a wide range of scenarios including emptying swimming pools and flooded basements or filling/emptying a water tank. The pumps are ideal for both domestic and commercial users too, including farming and construction sites.





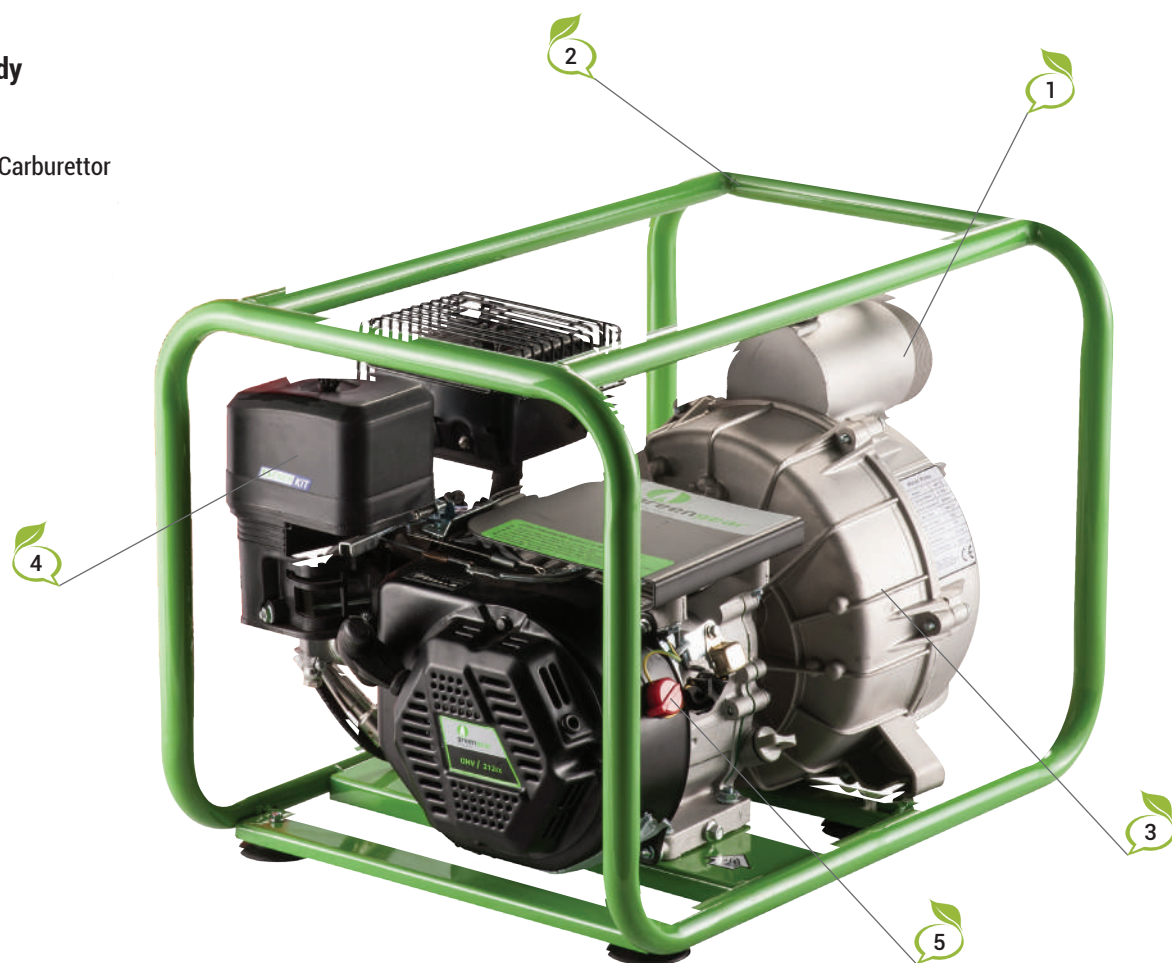
1 **Water Inlet**  
with threaded connection

2 **Steel Frame**

3 **Aluminium Pump Body**

4 **Dedicated ENERKIT Carburettor**

5 **On/Off Switch**



#### **Aluminium Body**

Sturdy aluminium body of the Water pump allows for long term performance and durability.



#### **Lever for Engine Control**

A lever on the pump allows for easy control of the pumping power depending on your needs.



## Technical Specifications

**PRODUCT CODE** P.WP.WTR.02.001

### PUMP FEATURES

Pump Type	Aluminium
Inlet/Outlet Diameter	50mm/ 50 mm - 2" / 2"
Suction	7 m / 22 ft.
Lift	30 m / 98.4 ft.
Flow	25 m <sup>3</sup> / h - 110 gal/m

### EQUIPMENT FEATURES

Certification	CE
Start Mode	Recoil
Dimensions	49 cm x 44 cm x 44 cm / 18.9" x 17.3" x 17.3"
Net Weight	24 kg / 52 lbs

### ENGINE SPECIFICATIONS

Engine	Greengear GG3GN - 4 stroke
Displacement	212 cc
LPG / Propane Technology	
Power and Speed	4.2 kW / 3600 rpm

**Use** Domestic/Commercial

**Run Time at Full Load \***  
4 hr - 5 kg / 9 lbs cylinder  
7.5 hr - 9 kg / 20 lbs cylinder

*\* Data depends on environment conditions and type of LPG mixture*



#### Robust Frame

The steel frame provides durability while still allowing for easy mobility.



#### Dedicated Steel Fittings

Steel fittings for a perfect seal even under the most difficult conditions.



## WP-3

## WP-4

## WP-3S



P.WP.WTR.03.001

P.WP.WTR.04.001

P.WP.SEW.03.001

Aluminium

80 mm/ 80 mm - 3" / 3"

7 m / 22 ft.

25 m / 82.2 ft.

42 m<sup>3</sup> / h - 185 gal/m

Aluminium

100 mm/ 100 mm - 4" / 4"

7 m / 22 ft.

25 m / 82.2 ft.

70 m<sup>3</sup> / h - 308.2 gal/m

Aluminium

80 mm/ 80 mm - 3" / 3"

8 m / 25.6 ft.

25 m / 82.2 ft.

45 m<sup>3</sup> / h - 198 gal/m

CE

Recoil

55 cm x 43 cm x 44 cm /  
21.6" x 16.9" x 17.3"

27 kg / 62.8 lbs

CE

Recoil

59 cm x 43 cm x 42 cm /  
23.2" x 16.9" x 16.5"

42.5 kg / 92.5 lbs

CE

Recoil

60 cm x 45 cm x 50 cm /  
23.6" x 17.7" x 19.6"

40 kg / 88 lbs

Greengear GG3GN - 4 stroke

212 cc



4.2 kW / 3600 rpm

Greengear GG7GN - 4 stroke

260 cc



5.6 kW / 3600 rpm

Greengear GG3GN - 4 stroke

212 cc



4.2 kW / 3600 rpm

Domestic/Commercial

3 hr - 5 kg / 9 lbs cylinder

5.5 hr - 9 kg / 20 lbs cylinder

Domestic/Commercial

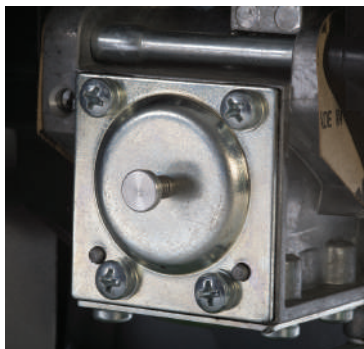
4 hr - 5 kg / 9 lbs cylinder

7.5 hr - 9 kg / 20 lbs cylinder

Domestic/Commercial

4 hr - 5 kg / 9 lbs cylinder

7.5 hr - 9 kg / 20 lbs cylinder



### Enerkit

Each Water Pump is equipped with a unique LPG dedicated ENERKIT carburettor, allowing optimum performance. ENERKIT has an automatic safety shut off valve, stopping the fuel supply when the engine is off.



### Recoil Start

Easy recoil starter mode equipped on every Water Pump.





# PRESSURE WASHERS

The pressure washer PW-2000 is simple to use and ideal for both domestic and commercial environments, with uses such as: cleaning patios, fences and vehicles.

The compact and lightweight design allows for easy use and mobility.

Equipped with a foldable handlebar permitting storage in small spaces.

The pressure washer is equipped with 5 quick change nozzles: 0 degrees, 15 degrees, 25 degrees, 40 degrees and 65 degrees for soap.





- 1 Dedicated **ENERKIT** Carburettor
- 2 **Foldable Handlebar** for Transportation
- 3 **Gun with Soft Grip**
- 4 **Pneumatic Wheels**
- 5 **Rubber Hose**
- 6 **Five Different Types of Nozzles**
- 7 **Steel Pump**



## Technical Specifications

## PW-2000

**PRODUCT CODE** P.PW.172.01.001

### EQUIPMENT FEATURES

Max Pressure	190 bar (2750 psi)
Flow	11 L / min - 3 gal / min
Hose Length	8 mt / 26.5 ft
Quick Connect Nozzle	0°, 15°, 25°, 40°
Low pressure Soap Nozzle	65°
Inlet Temperature	up to 60° C / up to 140° F
Start Mode	Recoil Start
Certification	<b>CE</b>
Dimensions	71 cm x 40 cm x 47.5 cm 28" x 15.7" x 18.7"
Net Weight	37.5 kg / 82.6 lbs

### ENGINE SPECIFICATIONS

Engine	Greengear GG3GN - 4 stroke
Displacement	212 cc
Rotary Speed	3600 rpm
LPG / Propane Technology	<b>ENERKIT</b>

**Use** Domestic/Commercial

**Run Time at Full Load**  
14 hr - 10 kg cylinder  
26 hr - 20 kg cylinder

**Fuel Consumption \* at full power** 850 g / h \*

\* Data depends on environment conditions and type of LPG mixture



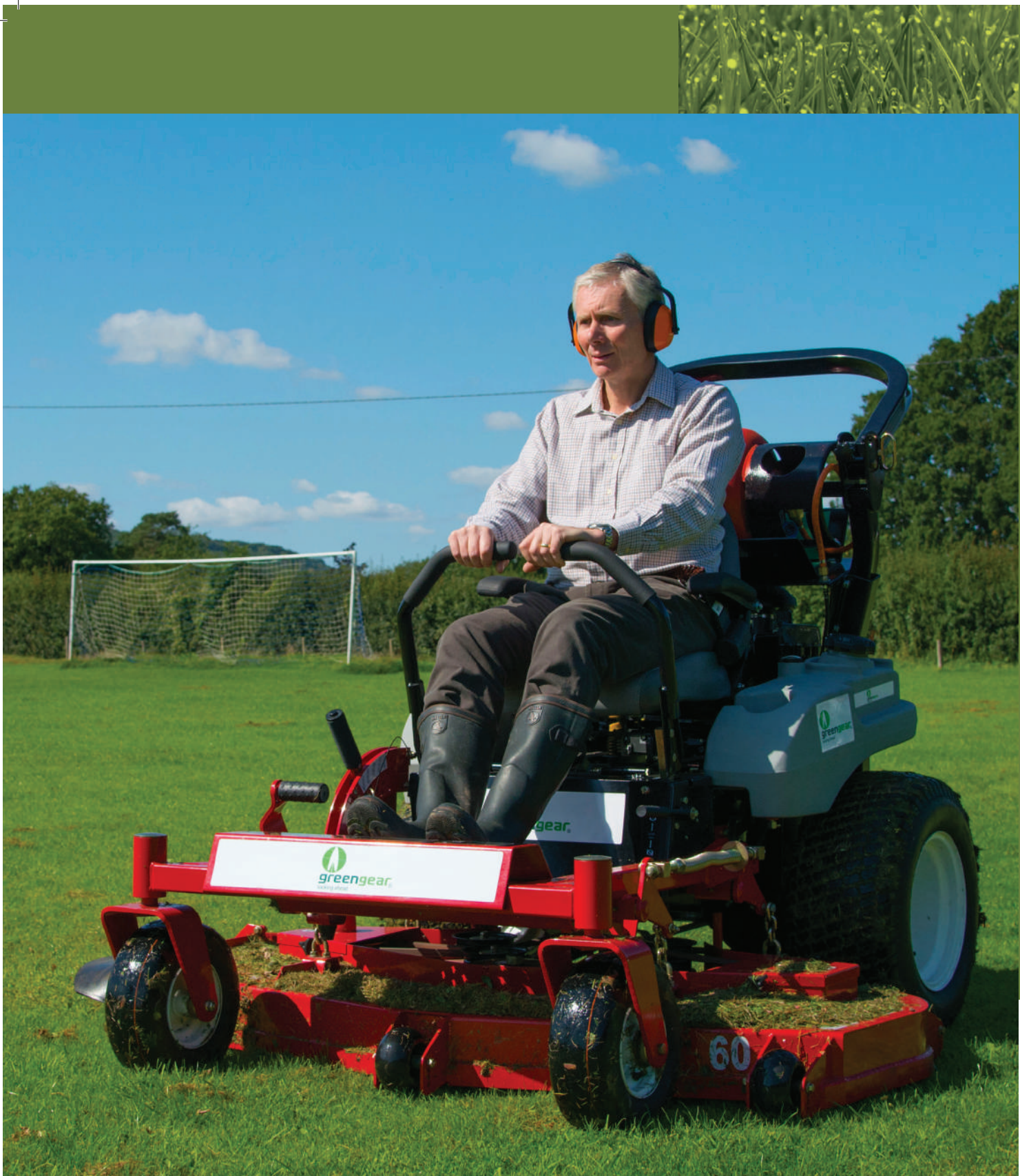
### Interchangeable Nozzles

Our Greengear Pressure Washers are equipped with 5 different interchangeable nozzles, including a low pressure soap nozzle.



### Resistant Pump

Pump consists of a brass manifold, engine casing made of aluminium alloy and an aluminium oscillating plate.



# ZERO-TURN MOWERS

The Zero-turn mower range is ideal for professional use, compact in size and offering high performance. With many different uses they are suitable for the maintenance of residential areas, large gardens, public parks and sports fields. The range is equipped with drive-integrated hydraulic transmission, ergonomic seat and simple lever movement control. Furthermore, the flat blades are in an adjustable steel of 7 or 13 positions, depending on the model. Mulching Kit and Grass Catcher Bag are also available as optional extra accessories on select models.







- 1 **Ergonomic Seat**  
with Adjustable Height
- 2 **Controls** for  
Easy Start
- 3 **Precise Control**  
for **Height Adjustment**
- 4 **Levers** for Precise  
Acceleration and Rotation
- 5 **Anti-Roll Bar**



#### Regulation Height Plate Cutting Blades

The blade height of the mower is controlled simply by moving a lever positioned to the right of the seat. There are 13 possible adjustment positions on the Cobra model and 7 adjustment positions on the Viper model.



#### Cylinder Bracket

Several types of LPG cylinder brackets are available to suit different cylinder shapes and sizes.



## 52 Cobra



### Technical Specifications

**PRODUCT CODE** N.ZT.052.23.001

#### EQUIPMENT FEATURES

Blade Width	130 cm / 52"
Blades	3
Speed	16 Km/h (forward) - 8 Km/h (reverse)
Start Mode	Electric
Mulching Kit	Upon Request
Certification	CE
Dimensions	200 cm x 140 cm x 180 cm / 80" x 55" x 70"
Net Weight	489 kg / 1078 lbs

#### ENGINE SPECIFICATIONS

Engine Model	Kawasaki - 4 stroke
Displacement	726 cc
Rated Power	23 HP / 17 KW
LPG / Propane Technology	ENERKIT



#### Ergonomic, Comfortable and Adjustable Seat

Thanks to a padded seat and sturdy armrests, mowing can be comfortable for long periods of time.



#### Cutting Deck with Double Blades

The double blades allow for flawless precision mowing on a large scale.



# 60 Cobra

# 46 Viper

# 46x2 Viper



N.ZT.060.27.001

N.ZT.046.20.001

N.ZT.046.20.201

150 cm / 60"

120 cm / 46"

120 cm / 46"

3

3

3 (double blades)

16 Km/h (forward) - 8 Km/h (reverse)

11 Km/h (forward) - 5 Km/h (reverse)

11 Km/h (forward) - 5 Km/h (reverse)

Electric

Electric

Electric

Upon Request

Upon Request

Upon Request



200 cm x 150 cm x 180 cm /  
80" x 65" x 70"

182 cm x 120 cm x 110 cm /  
70" x 44" x 43"

182 cm x 120 cm x 110 cm /  
70" x 44" x 43"

498 kg / 1102 lbs

265 kg / 573 lbs

268 kg / 584 lbs

Kawasaki - 4 stroke

Briggs & Stratton 40G7 - 4 stroke

Briggs & Stratton 40G7 - 4 stroke

726 cc

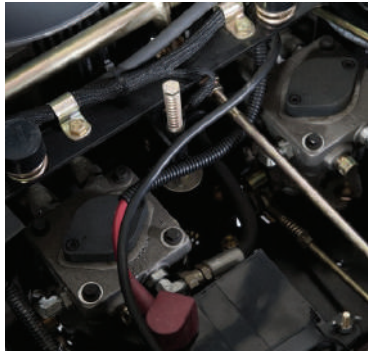
656 cc

656 cc

27 HP / 20 KW

20 HP / 15 KW

20 HP / 15 KW



## Hydraulic Motors for Traction and Movement

Hydraulic motors allow the cutting blades to ensure accuracy and functionality for every type of user.



## Rear Grass Catcher

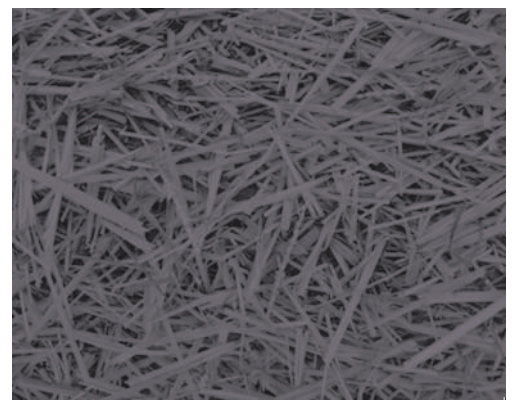
The Cobra model has the optional accessory of a rear grass catcher bag located at the rear of the mower.



# TRANSPORTERS

The Transporter range are all available with hydraulic transmission with two different tipping options: Manual or Hydraulic and with two different types of bucket: Agricultural or Dumper.

The Transporters are able to make precise movements on rough paths and transport cargo on difficult terrain with steep slopes. Equipped with high quality components to improve the flexibility and maneuverability of use, therefore guaranteeing the upmost safety for the user. All Transporters come with a parking brake and variations of the bucket range from 300kg to 420kg.







#### Hydraulic Tipping

The hydraulic tipping feature of the Transporters allows for easy emptying of the contents of the bucket without strain.



#### Large Crawler Tracks

Crawler tracks allow for a perfect front / rear balance which ensures the load distribution and exact adherence to the ground.



## Technical Specifications

### PRODUCT CODE

### EQUIPMENT FEATURES

Max Loading (plane)

Max Speed

Trasmission

Tipping

Certification

Bucket Type

Dimensions

Net Weight

### ENGINE SPECIFICATIONS

Engine Model

Displacement

Rated Power

LPG / Propane Technology



#### Controller

A convenient handle that allows easy operation of the Transporter in even the most difficult terrain and confined spaces.



#### Bracket for Cylinder

A practical LPG cylinder bracket which is specifically designed to be able to allocate different types of cylinders.



## AMT-3.0C

## AMTI-4.0C

## AMTI-4.2D



N.MT.300.01.001

N.MT.420.0C.001

N.MT.420.0D.002

300 Kg / 660 lbs

420 Kg / 935 lbs

420 Kg / 935 lbs

< 3.2 Km/h

< 3.2 Km/h

< 3.2 Km/h

Hydraulic

Hydraulic

Hydraulic

Manual

Hydraulic

Hydraulic



Agricultural

Agricultural

Dumper

100 cm x 65 cm x 146 cm /  
39.3" x 25.6" x 57.5"

110 cm x 57 cm x 95 cm /  
43.3" x 22.44" x 37.40"

110 cm x 57 cm x 95 cm /  
43.3" x 22.44" x 37.40"

205 kg / 452 lbs

203 kg / 447.5 lbs

203 kg / 447.5 lbs

AMG 210 - 4 stroke

AMG 210 - 4 stroke

AMG 210 - 4 stroke

208 cc

208 cc

208 cc

6.5 HP

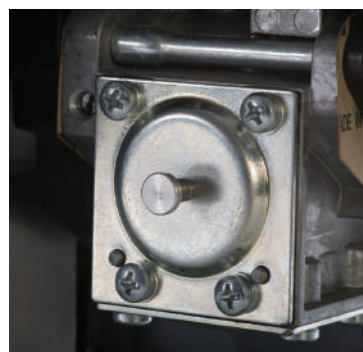
6.5 HP

6.5 HP



### Resistant Bucket

Equipped with a sturdy frame with steel thick bucket, which limits vibration and noise.



### Enerkit

Each Transporter is equipped with a unique LPG dedicated ENERKIT carburettor, allowing optimum performance. ENERKIT has an automatic safety shut off valve, stopping the fuel supply when the engine is off.





# SHREDDERS

Greengear AXO Bioshredder range offer two different models: Crunch, which has a cutting diameter of 70 mm and Razor which is equipped with electric start, and able to shred branches up to a diameter of 120 mm. The heart of the machines is composed of roller balanced sheet metal, with two blades: a beat blade and a counter blade steel. These machines are ideal for domestic and commercial customers including forestry applications and public park maintenance.





- 1 Reinforced **Expulsion** Structure
- 2 Simple and Robust **Chute**
- 3 **Wheels** for Easy Mobility and Transport
- 4 Emergency **Stop Button**



#### Adjustable Expulsion Chute

This can be adjusted to 3 different positions according to the need/preference.



#### Supporting Feet with Pivoting Drawbar and Towing Eye

This support increases the stability and can be adjusted for transportation.





#### Electric Starter (Razor model)

The shredder can be powered with a simple electric start, eliminating the difficult manual recoil ignitions.



#### Hopper (Razor model)

The largest size, you can shred branches up to 120cm diameter.



CRUNCH

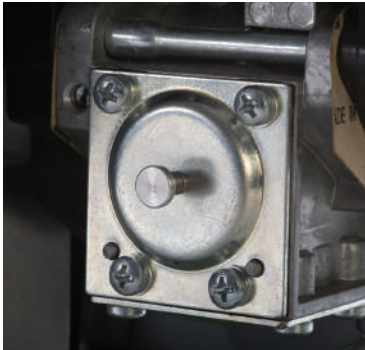
RAZOR



Technical Specifications		
PRODUCT CODE	G.BS.070.65.001	G.BS.120.15.001
EQUIPMENT FEATURES		
Chipping Capacity	3 mc / hr	6 mc / hr
Cutting Diameter	70 mm / 2.8"	120 mm / 4.7"
Cut System	2 Blades with 6 knives	2 blades with adjustable knives
Certification	CE	CE
Dimensions	80 cm x 60 cm x 116 cm / 27.5" x 22.0" x 23.2"	90 cm x 65 cm x 120 cm / 35.4" x 25.6" x 47.2"
Net Weight	70 kg / 154 lbs	90 kg / 191,8 lbs
ENGINE SPECIFICATIONS		
Engine Model	AMG 210	AMG 420
Displacement	208 cc	420 cc
Rated Power	6.5 HP	15 HP
LPG / Propane Technology	ENERKIT	ENERKIT



**Tractor Wheels  
(Razor model)**  
Large wheels for easy transportation without strain.



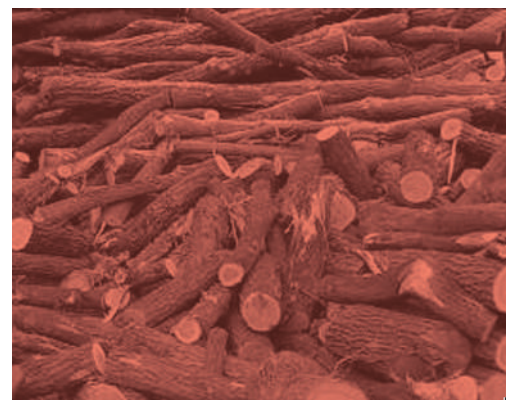
**Enerkit**  
All models come equipped with a dedicated LPG ENERKIT carburettor allowing the shredders to reach optimum performance.





# LOG SPLITTERS

The Greengear AXO Log Splitter is equipped with a 6.5 hp 4-stroke engine and has a splitting force equivalent to 8 tonnes. Thanks to the wheel kit and robust handle, it can be easily transported to even the most rural of areas without strain. It also has a control for blade lowering which activates only when both levers are tightened on the trunk, for optimum safety.





- 1 Long Life Blade
- 2 Ergonomic Handle for Movement
- 3 Levers for Simplified Commands
- 4 Metal Frame
- 5 Wheels for Easy Mobility and Transport




## Technical Specifications

**PRODUCT CODE** G.LG.520.08.001

### EQUIPMENT FEATURES

Thrust Power	8 tons
Max Trunk Length	520 - 1040 mm / 21" - 41"
Max Trunk Diameter	520 mm / 21"
Cut Speed	4.1 cm / s
Body	Two-wheeled body
Certification	CE
Net Weight	127 kg / 280 lbs
Dimensions	126 cm x 71 cm x 49 cm 49.6" x 27.9" x 19.2"

### ENGINE SPECIFICATIONS

Engine Model	AMG 210
Displacement	208 cc
Rated Power	4.8 KW
LPG / Propane Technology	



#### Wheels

The two simple wheels allow for easy movement, to maneuver the product as close as possible to the desired location with little strain.



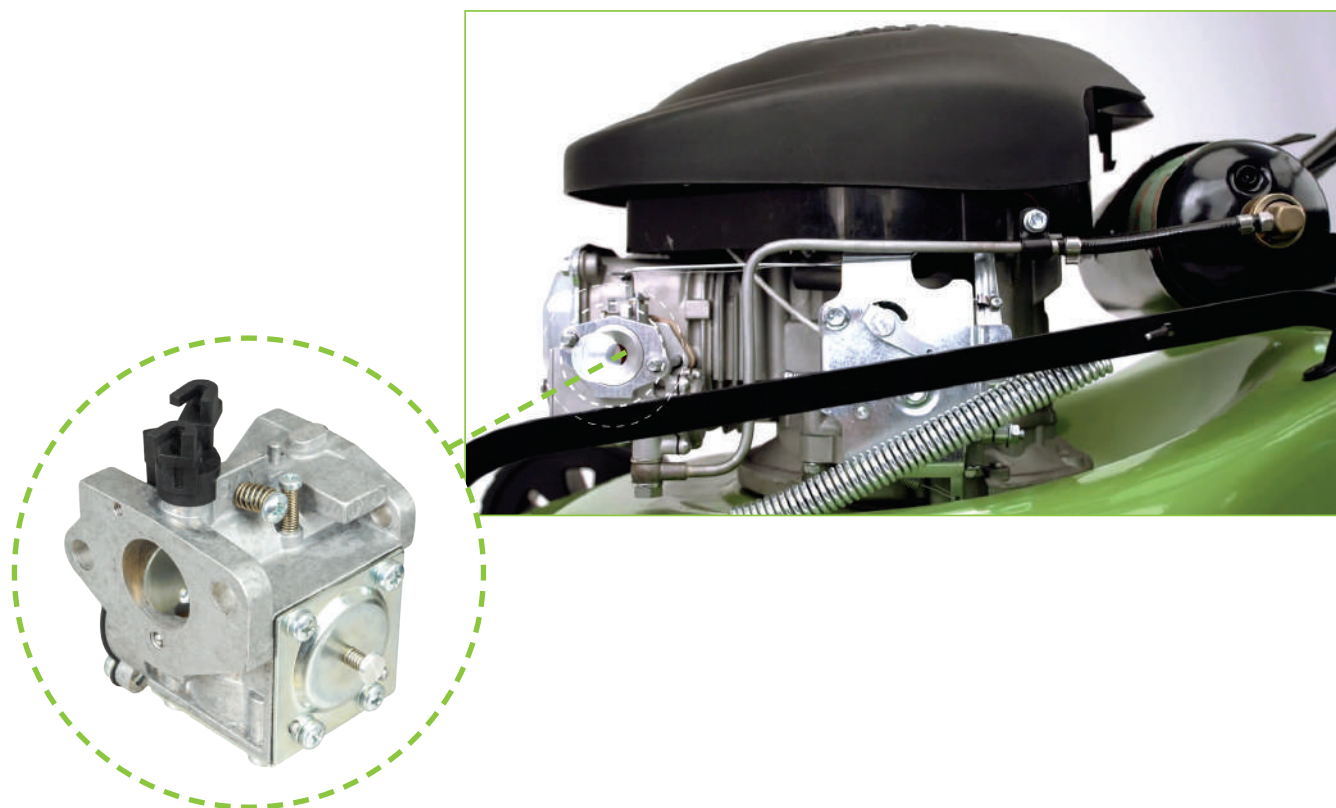
#### Dual Control Levers

Moving the control levers allow movement for simple and effective results.



All of our products are engineered in house and come equipped with an ENERKIT – replacing the gasoline carburettor, enabling all engines to run efficiently and effectively on LPG.

Reap the immediate benefits of protecting the environment and saving money with Italian designed high quality technology.







# Notes

-----

-----

-----

-----

-----

-----

-----

-----

-----

-----

-----

-----

-----

-----

-----

-----

-----

-----

-----

-----

-----







**Cavagna Group UK**  
24 Longmoor Lane  
Breaston, Derby  
DE72 3BB

Tel. 01332 875878  
Fax. 01332 875868  
Sales@cavagna.co.uk



**GREENGEAR GLOBAL SRL**  
Viale Duca Degli Abruzzi 163  
25124 Brescia  
Tel. 0039 030 3533370  
Fax 0039 030 3538315

Website: [www.greengearglobal.com](http://www.greengearglobal.com)

Mail: [info@greengearglobal.com](mailto:info@greengearglobal.com)



[www.facebook.com/greengear.co](http://www.facebook.com/greengear.co)



[#greengear](https://twitter.com/greengear_#greengear)



<https://www.youtube.com/user/greengearco>

